



Councillor Lane, Cheadle, SK8 2JF

Guide Price £100,000

🛏 1 🍳 1 🛋 1

- GROUND FLOOR APARTMENT.
- SPACIOUS LIVING ROOM.
- SEPARATE STORAGE.
- POPULAR LOCATION.
- OFF ROAD PARKING.
- ONE BEDROOM.
- SHOWER ROOM.
- LEASE TERM - 250 YEARS FROM 1993.
- CLOSE TO AMENITIES.
- WELL PRESENTED THROUGHOUT.

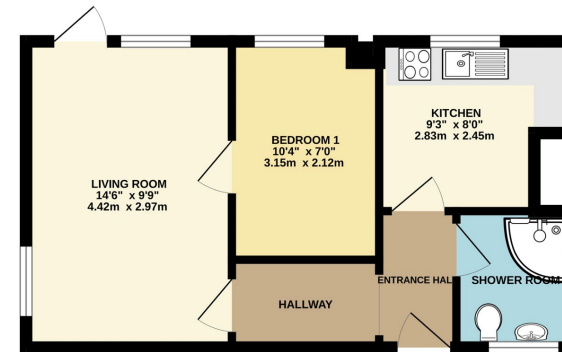


A well presented apartment OCCUPYING A GROUND FLOOR POSITION within a popular development, situated within EASY REACH OF CHEADLE VILLAGE. The accommodation comprises of a private entrance hallway, spacious lounge/living room with doors opening to a patio area, a fitted kitchen with space and plumbing for appliances and one well proportioned bedroom served by a three piece shower room.

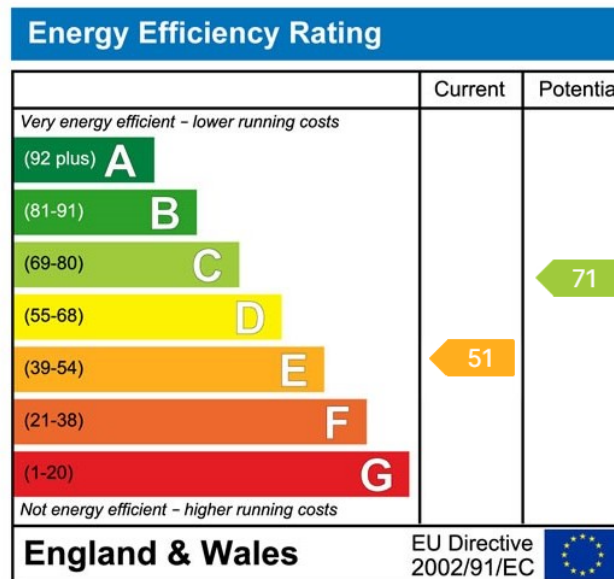




GROUND FLOOR
368 sq.ft. (34.2 sq.m.) approx.



TOTAL FLOOR AREA: 368 sq.ft. (34.2 sq.m.) approx.
While every effort has been made to ensure the accuracy of the floorplan, measurements of doors, windows, corners and any other items are approximate and no responsibility is taken for any error, omission or misstatement. This plan is for illustrative purposes only and should be used as such for any prospective purchase. The services, appliances and equipment shown have not been tested and no guarantee as to their operability or efficiency can be given.
Made with Floorplan 12022



9 Gatley Road, Cheadle, Cheshire SK8 1LY Tel. 0161 428 1488 Fax. 0161 428 1479
Email. mail@andrewdawson.co.uk